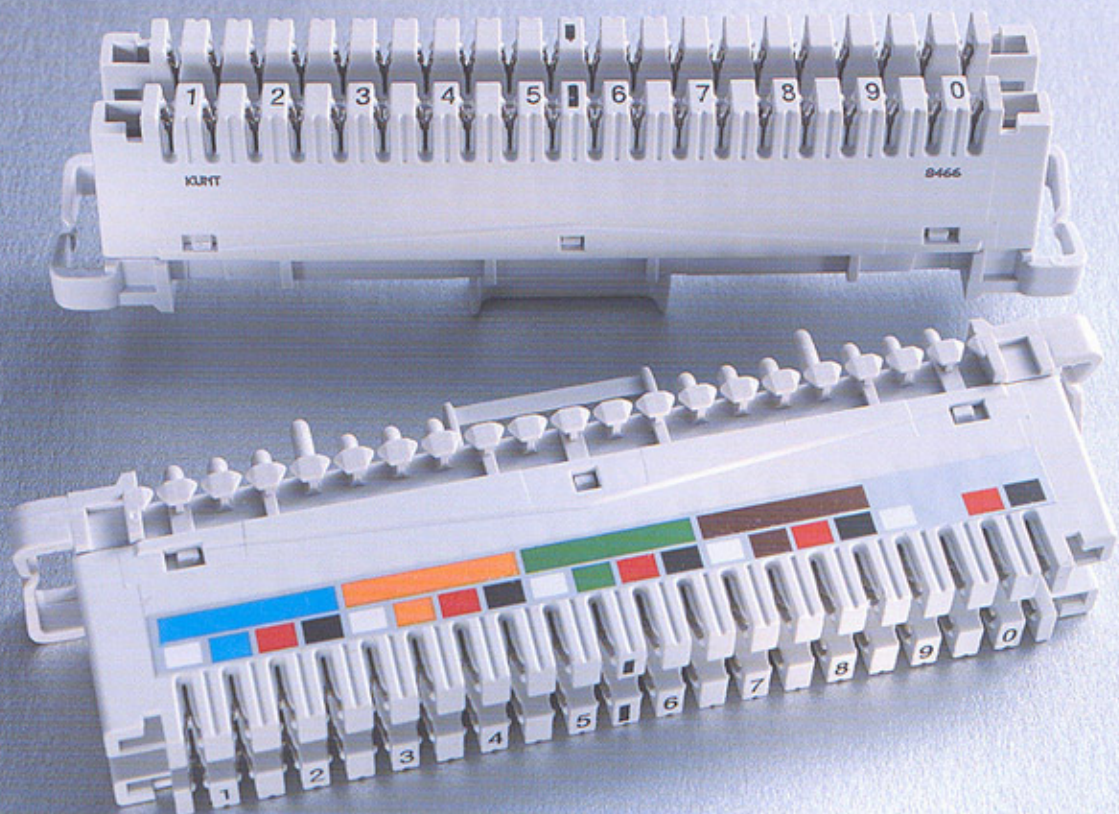




## YAK - 20 & 21

### CONNECTION & DISCONNECTION MODULES 2/10

- ★ Kunt connection and disconnection IDC modules provides simple and high quality connection of jumper wires and cables in all points on the telecommunications network without the need for soldering, screwing and stripping.
- ★ The disconnection module consist of disconnectable IDC contacts for breaking a connection and test applications.
- ★ Overvoltage protection is available via plug-in magazines.
- ★ The module is made extremely versatile because of the capability of row by row installation of the small and modular units.
- ★ Advantages of the quick connection technique.
  - Simple, quick handling
  - Neatly ordered arrangement
  - It is a secure contact technique, even when subject to extreme climatic and environmental condition, vibration or load currents
  - Assures maximum security, because of the 45° slanted position of the contacts



## Versions

Code	Description	Pair Capacity	Wire Diameter		Max. Insulation outer diameter
			mm	AWG	
YAK-20	Connection Module	10	0,4 - 0,8*	26 - 20	1,6 mm / 0,063 in.
YAK-20/100	Termination Block w/connection modules	100	0,4 - 0,8*	26 - 20	1,6 mm / 0,063 in.
YAK-21	Disconnection Module	10	0,4 - 0,8*	26 - 20	1,6 mm / 0,063 in.
YAK-21/100	Termination Block w/disconnection modules	100	0,4 - 0,8*	26 - 20	1,6 mm / 0,063 in.

\* Further connections must be with wires  $\geq 0,6\text{mm}$

## Specifications

### Housing Material

Self extinguishing Thermoplastic material

### Contact Material

High strength special brass alloy with anti-corrosion coating.

### Electrical Characteristics:

Contact resistance (IEC 60 512-2-2)

$\leq 2,5\text{m}\Omega$  ( $\leq 1\text{m}\Omega$ ; ASTM B539-96)

Dielectric Strength (IEC 60 512-2 Test 4a)

$\geq 2\text{KVAC}$  x 60sec.

Insulation Resistance (IEC 60 512-2 Test 3a)

$> 50\text{G}\Omega$

Surge Voltage (IEC EN 60950)

$\geq 3,6\text{ kV}$  1,2 / 50  $\mu\text{s}$

Surge Current (ITU T-K 12)

8/20  $\mu\text{s}$  5kA Dis.Mod. - 8/20  $\mu\text{s}$  10kA Con.Mod.

### Environmental Characteristics:

Temperature Cycle (IEC 60 512-6-11d)

-40°C + 80°C

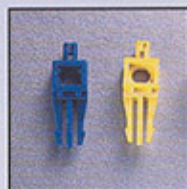
### Durability

Minimum 250 insertion and withdrawal cycles, (IEC 60 512-5-9a)

$\leq 2,5\text{m}\Omega$

### Data Transmission

CAT 3 as per EN 50173



Yak-21DP  
Disconnection Plugs



Yak-23/1-X 2x2  
Test Cord



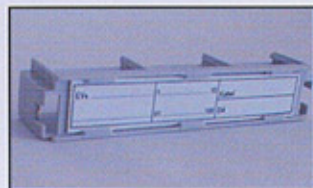
Yak-23/2-X 4x4  
Test Cord



Yak-20/100F  
Dust Cover, Flat



Yak-24/10-3 Overvoltage  
Magazine, 3 pole



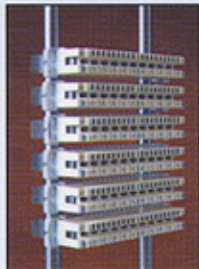
Yak-25 Label Holder



Yak-24/2-5 5 Point Overvoltage and  
Overcurrent Protector



Yak-22 Insertion Tool



Yak-20/21PA  
Profile version module

**Important Notice To Purchaser:** All statements, technical information and recommendations contained herein are based on tests we believe to be reliable, but the accuracy or completeness thereof is not guaranteed, and the following is made in lieu of all warranties, express or implied: Seller's and manufacturer's only obligation shall be to replace such quantity of the product proved to be defective. Neither seller nor manufacturer shall be liable for any injury, loss or damage, direct or consequential, arising out of the use of or the inability to use the product. Before using, user shall determine the suitability of the product for this intended use, and user assumes all risk and liability whatsoever in connection therewith. No statement or recommendation not contained herein shall have no force or effect unless in an agreement signed by officers of seller and manufacturer.



Address : İkitelli Organize Sanayi Blg.  
Turgut Özal Cad. No: 216  
34670 İkitelli-İstanbul  
Tel : 90 212 549 74 74  
Fax : 90 212 549 74 75  
Web : www.Kunt.com.tr  
e-mail : support@kunt.com.tr