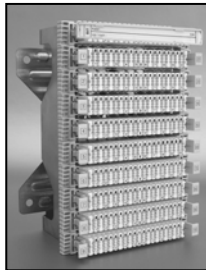


INSTALLATION INSTRUCTION

Issue date
09.2005

**For KUNT CAT5 Connection and Disconnection Blocks
(Yak-40/100 and Yak-41/100)**



KUNT CAT5 Disconnection Block Yak-41/100 for 100 pairs



| Pos | Equipment | <u>Kunt Code</u> |
|-----|--|------------------|
| | KUNT CAT5 Connection Block (Yak-40/100) | 30847 |
| | KUNT CAT5 Disconnection Block (Yak-41/100) | 30848 |
| | Includes the following items: | |
| 1 | 1 Back Mount Frame | 21195 |
| 2 | 1 Set of 10 Connection Magazines (10 pieces) | 21352 |
| | 1 Set for 10 Disconnection Magazines (10 pieces) | 21355 |
| 3 | 2 Sets of attachable numbering plates (from 1 to 0 and from 10 to 100) | 21304 |
| 4 | 1 Attachable writeable label holder with label | 21347 |

| | | |
|---|--------------|--------------|
| 5 | 1 Dust cover | 20933 |
|---|--------------|--------------|

| | | |
|---|---------------------------------|--------------|
| 6 | 1 Set of screw connection parts | 20870 |
|---|---------------------------------|--------------|

Including

4 Fixing nuts

4 Combi fixing screws

Kunt Code

| | | |
|---|----------------------------|--------------|
| 7 | 1 complete grounding screw | 21346 |
|---|----------------------------|--------------|

Included parts:

1 flat round screw M5x16

1 washer (big)

1 contact metal sheet

1 washer (small)

2 hexagonal nut M5x2,6

1 spring washer

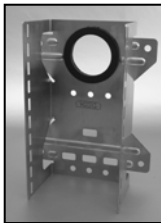
1 protection cover

| | | |
|----|--|--------------|
| 8 | 1 attachment part with hexagonal nut and spring washer | 21889 |
| 9 | 1 cable tie | 11472 |
| 10 | 1 disposable Insertion Tool for single use | 20930 |

| Pos | Equipment | <u>Kunt Code</u> |
|-----|-----------|------------------|
|-----|-----------|------------------|

Accessories:

| | | |
|----|--|--------------|
| 11 | One pair Overvoltage Protector | 31144 |
| 12 | Test cord, 2-poles | 31016 |
| 13 | Test cord, 4-poles | 31017 |
| 14 | 1 Disconnection Plug | 31246 |
| 15 | Marking cap red | 31127 |
| 16 | Earthing contact | 31364 |
| 17 | Insertion Tool (no picture) Quante SID | |



Pos.1



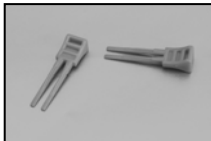
Pos.5



Pos.2



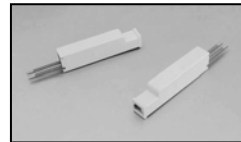
Pos.10



Pos.14



Pos.3



Pos.11



Pos.15



Pos.4



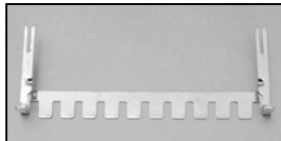
Pos.12



Pos.6, 7, 8



Pos.13



Pos.16

1. System Description

The Terminal Block is suitable for the connection of plastic isolated cable strands and installation wires. It can be used for secondary distribution and main cables. Cable strands and installation wires are terminated by usage of the Insertion Tool at the so called 'Insulation Displacement Contact'. For each contact, the diameter of the conductor is suitable from 0,35 to 0,8 mm (inner diameter) and strand diameter from 0,7 to 1.65 mm (outer, isolated diameter).

The Terminal Block is consisting out of a Back Mount Frame, which can be adjusted into a Cross Connection Cabinet, 10 pair Connection and Disconnection Magazines, one attachable label holder, attachable numbering plates (from 1 to 0 and from 10 to 100) and one dust cover.

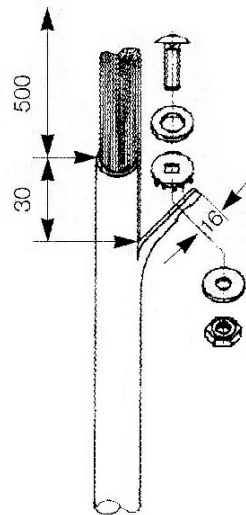
2. Installation Instruction

a) Preparation of non pressurized cables

Grounding of the cables :

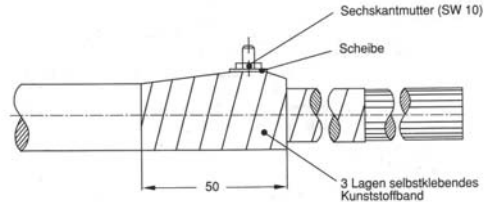
- Take off the cable case about 500 mm long.
- Wipe the petroleum filling mass with a cloth.
- Split the remaining case longitudinally 30 mm twice with 20 mm intervals.
A tongue of 20x30 mm will form.
- Punch a hole with 6 mm diameter in the middle of the tongue.
- Install the parts belonging to the grounding screw. (see the drawing).
- Twist the cable case tongue backwards to the cable core.

Fix the cable case tongue to the cable case with self-adhesive isolation strip.
Use at least two layers of isolation strip between the screw head and cable strand.

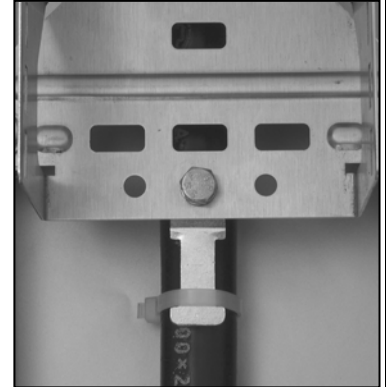


Montage :

- Install the outward thread of the grounding screw with the nuts given to the Back Mount Frame.
- Fix the attachment part together with the elbow towards the back to one of the three bottom holes of the Back Mount Frame with the hexagonal screw supplied .

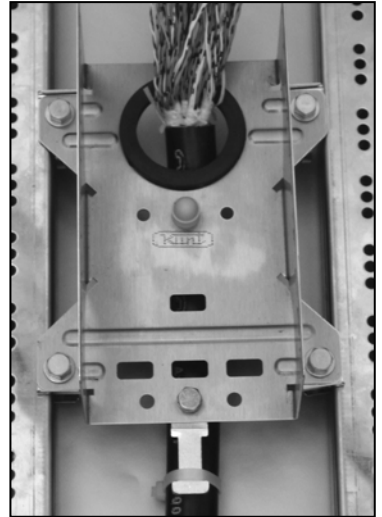


- Fix the cable from the lower end to the elbow with the cable connector.
- Pass the cable core through the cable guide and push towards the Back Mount Frame .



b) Installation of the cable heads

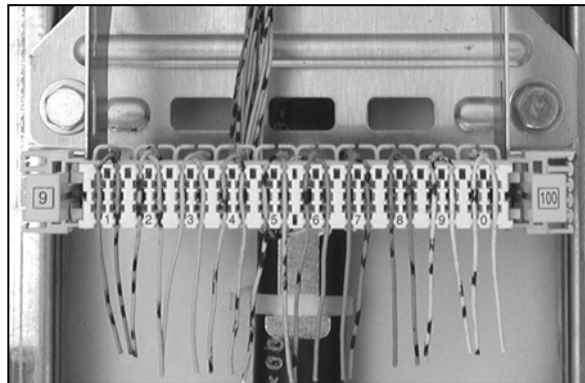
- Provide the locking of the Back Mount Frame onto the Mounting Rack of the Cross Connection Cabinet.
- Tighten the hexagonal screws (See picture)



c) Termination of the Disconnection and Connection Block:

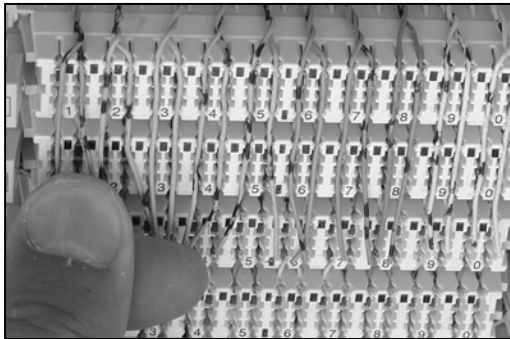
Preparation and guiding of the cables:

- Split the cable core as 10 double-strand bunches and mark with the colored group rights.
- The revision procedures should be performed in a reserved strand with the aid of a round bar as an auxiliary tool such as a screwdriver.
- Push the main bunch through the middle hole under the magazine. There are pins on the left or the right side of the hole for the smooth movement of the strands.
- With your two fingers, push the supports on both sides of the magazine, fix the magazine with the wire guide cam upwards to the Back Mount Frame and set the fixing legs free. The separation of cable heads to the magazines should be performed from downwards to upwards



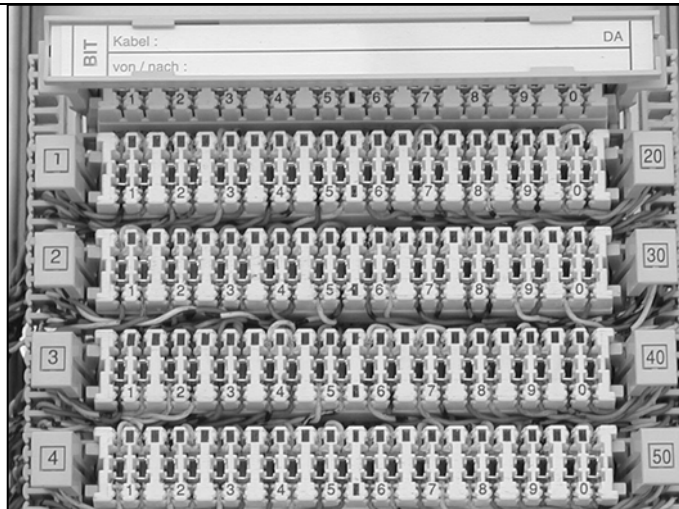
Terminating the Cables:

- Place the strands to the contact slot projected for them.
 - Press each strand with the contact device.
- A click tells you that the connection is correct,
Cut the excess strands.



d) Marking

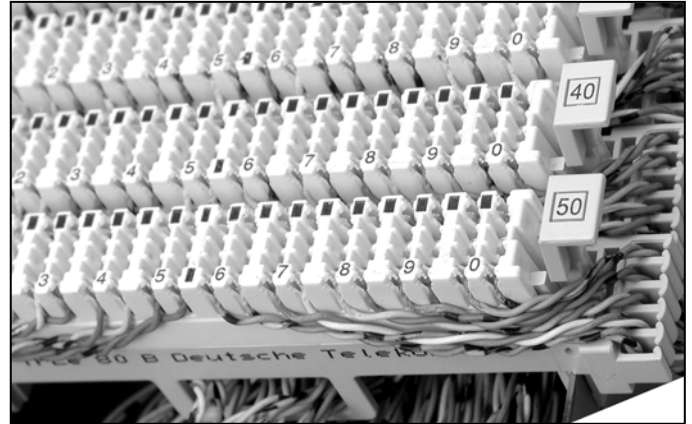
- Writing the label
- Label and folio will be placed into label holder.
- Label frame is fixed on the upper section of the magazine.
- The attachable numbering plates have to be attached onto the holes of the magazines support legs on the left from 0 to 9 and on the right from 10 to 100.
- Dust cover to be attached onto the magazines



e) Connection of the distribution side

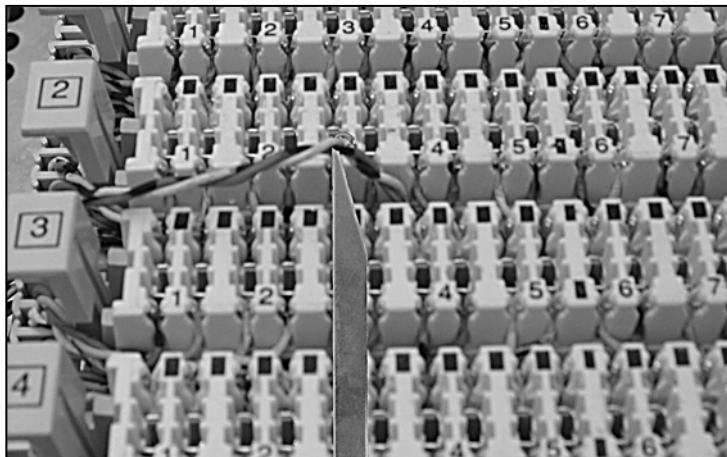
Termination :

- Distribution of wires to the left and right guide cams
Pass the additional wire from 1 to 5 through the left wire guide cam in order from top to bottom and from 6 to 10 through right wire guide cam in order from bottom to top.
- Place the wires into the contact slots and terminate them by using the insertion tool.



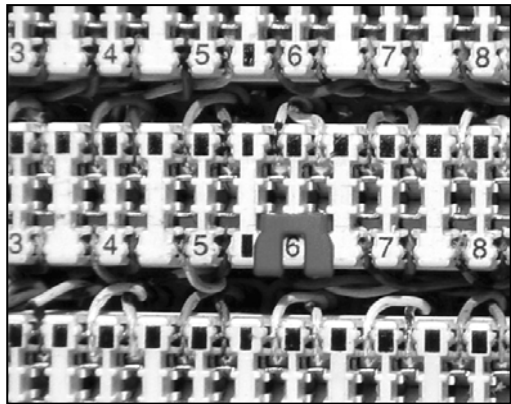
Dismantling the cables and cable strands:

- Take the strands that are to be dismantled off from the wire guides and pull them from the contact slots towards to the middle with the pulling hook of the insertion tool or a sharp pincer.



Marking :

- There are red marking plugs for the marking of special pairs (connections).
- Place the marking plugs to the magazines as a bunch.



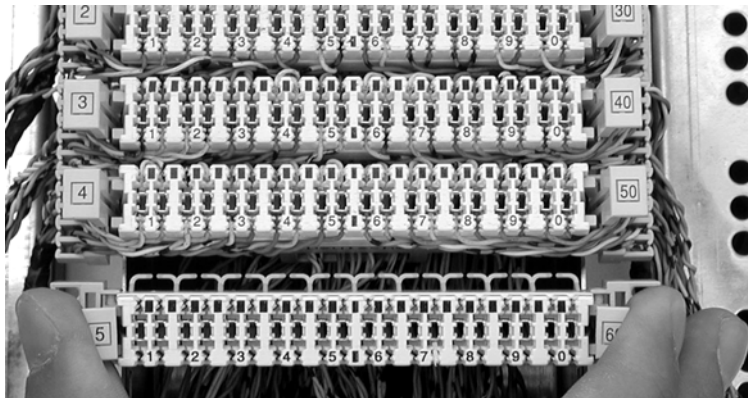
f) Testing:

- For parallel connection to the line, usage of 2-pole Test cord.
Contact **a** of related pair to the white socket and contact **b** to the black socket are clamped
- For separation of the line, usage of 4-pole test cord
White sockets are going to be clamped to contact positions **a** and **a'** of related pair contacts, respectively black sockets to be clamped to contact positions **b** and **b'**



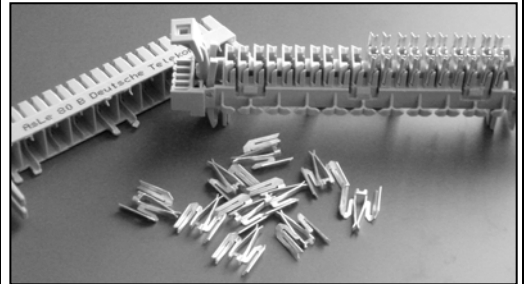
g) Dismantling (Uninstallation operation):

- Magazines can be able to remove out of the Back Mount Frame by hand. The support hooks are separated from the Back Mount Frame by twisting the support legs on both sides of the Back Mount Frame towards the middle and at the same time the wire guide on the sides are pulled outwards.

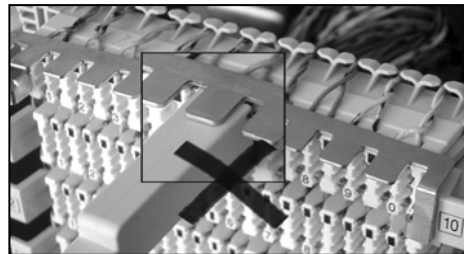
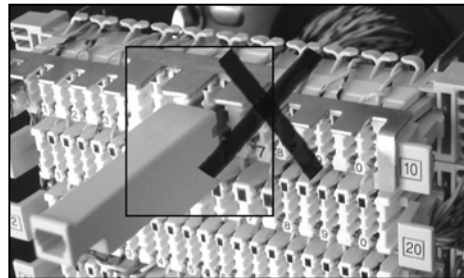
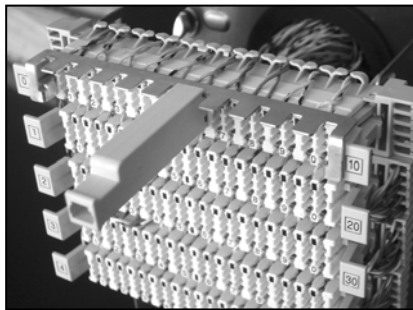
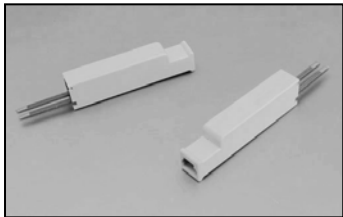


h) Disposal

- The magazines are separated according to their types as shown in the pictures and may be regained by a relevant recycling process. The production material is indicated on the plastic parts.



i) **Single Pair Overvoltage Protector**



Kunt Elektronik San. ve Tic. A.S

Organize San.Böl. Ataturk Bulvarı No:216

34670 Ikitelli / Istanbul, TURKEY

Tel : **+90 212 549 74 74**

Fax : **+90 212 549 74 75**

e-mail :**support@kunt.com.tr**

www.kunt.com.tr